

Summary of Brightspace Core and Performance Plus for SUNY

(Everything included in this document is available to SUNY campuses as part of the base license.)

Brightspace Core

Brightspace Core includes all of the key products that you need to offer an engaging and personalized learning experience as well as the support, services, and training to get the most out of them.

FEATURE	WHAT'S INCLUDED		
Learning Environment	Brightspace includes a complete suite of easy-to-use teaching and learning tools many of which are listed below.		
	Course Management and Design:		
	Lessons	Links	Self-Registration
	Classlist	Glossary	External Self Registration
	Manage Users	Bookmarks	Release Conditions
	Role Switch	Data Purge	Intelligent Agents
	Impersonate Users	Archive	Special Access
	Attendance	Content Instructional Design Wizard™	Brightspace Editor
	Seating Chart	Course Builder™	Insert Stuff
	Checklist	Templates	Cross Listing
	FAQ	Content Management	Copy Course Components
	Help		Discover
	Collaboration and Communication:		
	Activity Feed	Chat	Group Lockers
	Virtual Classrooms	Blog	User Management
	Announcements	Discussions	Notification Subscriptions
	Calendar	Synchronous Integration	Instant Messages
	Email	Social Integration	Video Note
			Brightspace Pulse (mobile app)
	Assessment and Reporting:		

	Awards Quick Eval Quizzes Question Library Self-Assessment Surveys	Rubrics Class Progress Dashboard Brightspace Analytics User Progress Dashboard Grades	Portfolio Competencies Assignments Advanced Statistics Video Assignments Data Hub
Flexibility and Extensibility:			
	Org Unit Hierarchy Roles and Permissions Manage Languages User Preferences	Custom Widgets Homepages Navbars	System Log Brightspace APIs Admin tool dropdown
Other tools:			
	Course Package Converter Bulk Course Create	Auditor Bulk User Management	Copy Course Batch IP for Authentication Solutions
Learning Repository	<p>An online library for storing, managing, and sharing your learning resources (learning objects). A learning object can be a quiz, a presentation, an image, a video, or any other kind of document or file you use to create course content and learning materials for online learning.</p> <p>When you publish your learning objects to Learning Repository, you tag those objects with metadata to classify and organize your learning objects and make them easily searchable for others. You can classify learning objects according to defined learning standards or goals. You can also review, rate, and provide feedback on learning objects to ensure high quality online resources.</p>		
Portfolio	<p>Students can document and share their learning journey with the Portfolio tool. It allows students to capture photos or videos of their learning as it happens, record their thoughts and reflections, and then share with instructors demonstrating growth over time against learning outcomes.</p>		

A few Brightspace Core feature highlights

Activity Feed | From one central spot on a course home page, course facilitators and employees can communicate easily about upcoming assignments, new content, or discussions, knowing that their content will be seen by everyone.

Content Experience | An intuitive way to create content aligned to outcomes in a course. It includes a variety of ways to add content, including an Brightspace Editor linking to Google Drive, OneDrive™, web links, videos, external learning activities and more.

Virtual Classrooms | A seamless way to connect face-to-face over video with multiple parties for instruction, assessment, and feedback. Schedule live discussions, office hours, video-based training, and more.

Video Assignments | Structured video workflows allow for repeated skill practice and knowledge application within a real-world context. By using a variety of feedback tools, students get personalized, pointed feedback from evaluators and peers.

Closed Captions for Video Note | Video Note allows users to record short videos and add them anywhere where the Brightspace Editor is available. To help ensure all users can learn without barriers, closed captions are automatically created.

Single Sign-On | To access a Brightspace platform-based application without having to log in, that is, without having to enter username and password credentials each time, single sign-on is available.

Course Conversion | Import course content from supported learning management systems and content providers into Brightspace.

APIs | Developers can use APIs to access and integrate the functionality of Brightspace with other applications and to create new applications.

Automation | Tools Automate a number of daily tasks with course batch and course conversion tools.

Disaster Recovery | Brightspace is a cloud-based learning platform, innovatively architected to support an active/active deployment model across AWS availability zones, offering you maximum reliability, availability, security, and peace of mind.

Data Hub | The Data Hub tool allows administrators to access predefined collections of data (data sets) from the Brightspace platform.

Quick Eval | Pulls together submissions from a variety of courses and tools to create a single list of the work to be completed. Easily prioritize by sorting and filtering.

Discover | students can drive their own learning by searching for, finding, and self-enrolling in courses that help them achieve their learning goals.

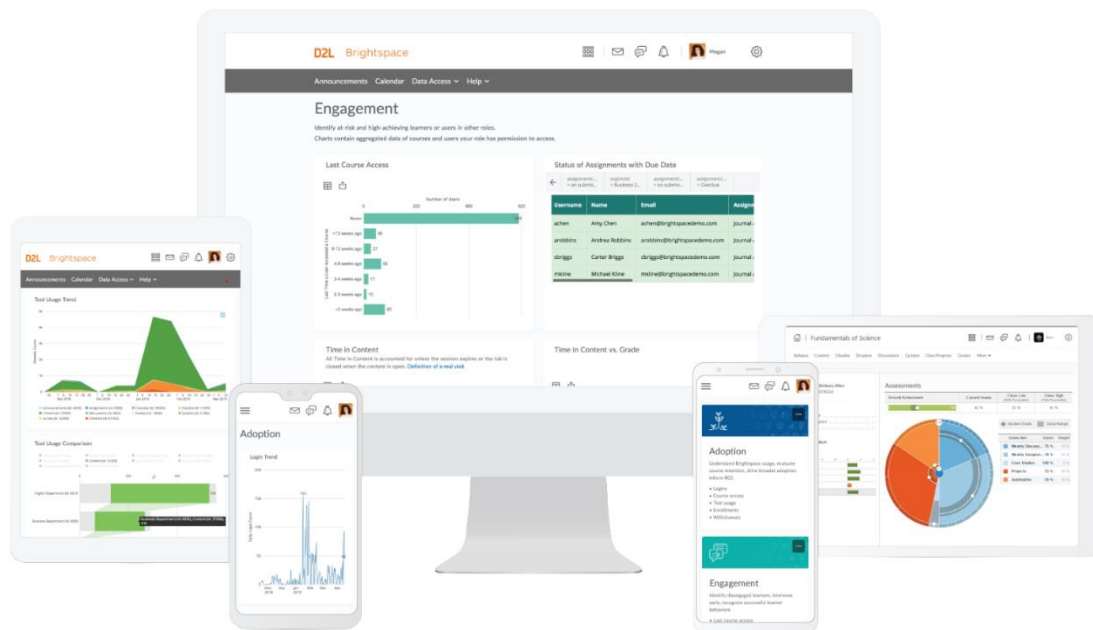
Brightspace Community | The Brightspace Community is a great place to interact with other Brightspace users online and get the latest information on Brightspace.

Performance Plus

The Performance+ package is composed of products that help you to make intelligent, informed decisions and to further drive student performance as well as institutional effectiveness. The analytics portion of this package includes Advanced Analytics, Predictive Analytics, and Insights Report Builder

Insights & Report Builder

Advanced Analytics offers rich visualizations of adoption, engagement, and assessment analytics. Not only can you track what is going on in a course through data, but also access information to help inform and direct your decision making. **Predictive Analytics** empower you to quickly see at-risk students and, with a click, action that data. With easy-to-understand student achievement data early on in courses along with a predictor of how a student will finish in the course, instructors can provide tailored interventions to help course correct learning paths. **Insights Report Builder** makes it easy to create personalized and customized reporting without additional systems, technical skills, alternate logins, or transferring data sets into a business intelligence tool for analysis.



Our Performance+ package also includes an adaptive learning engine which uses learning analytics to help drive student performance through adaptive, individualized learning paths. For further information, please visit <https://www.d2l.com/products/package/performance/>.

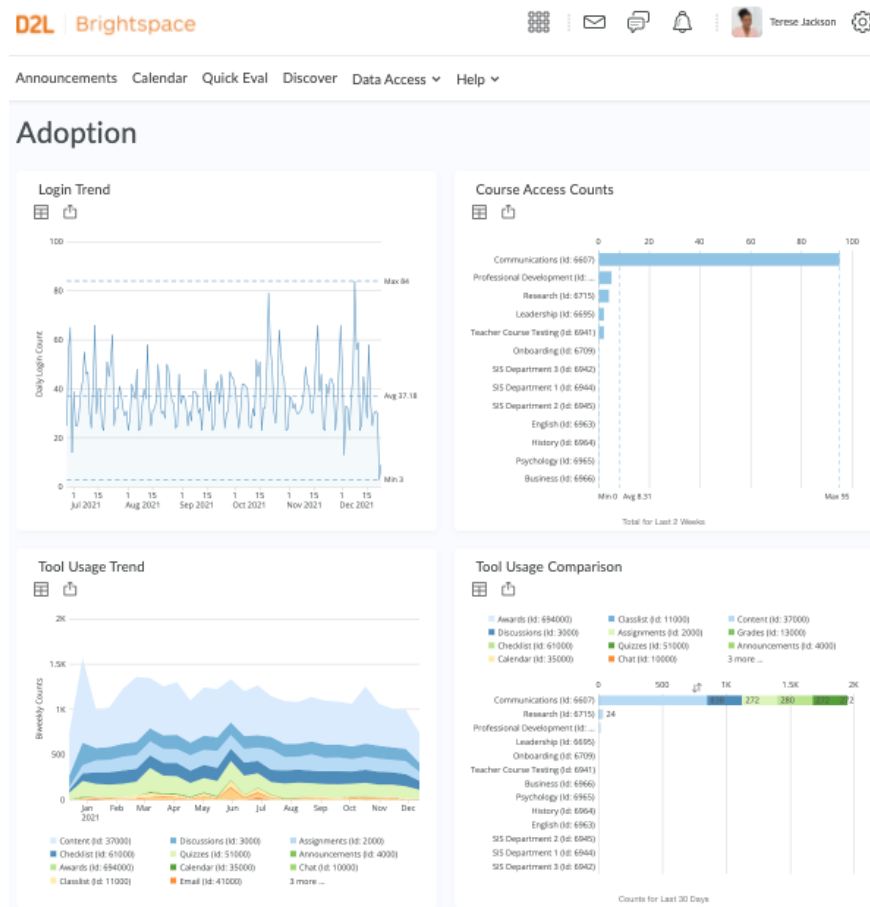
Insights Portal

The Insights Portal offers four main dashboards:

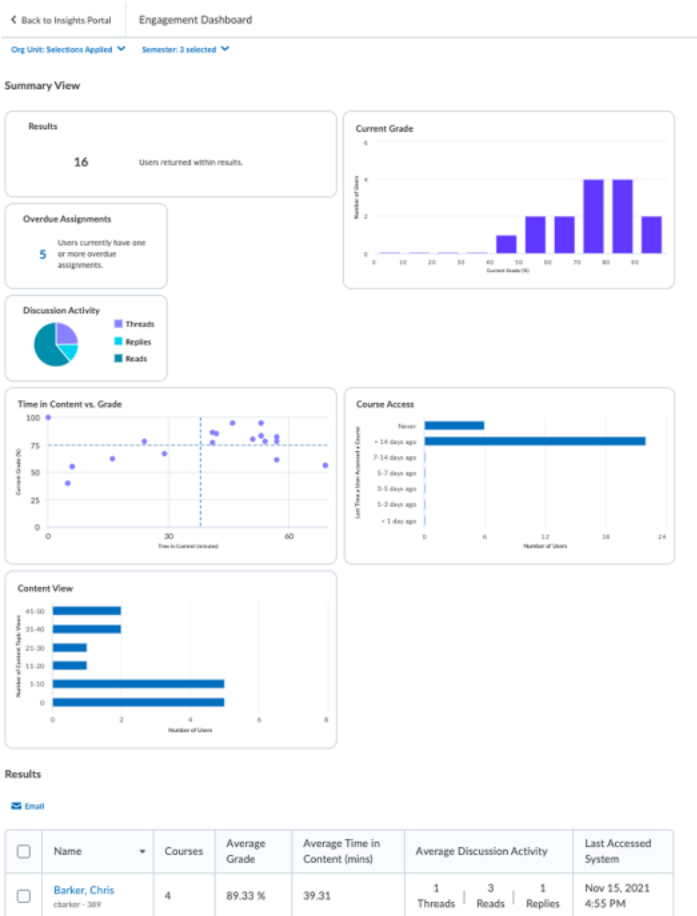
- The Adoption Dashboard
- Engagement Dashboard
- Learner Engagement Dashboard
- Assessment Quality Dashboard

ADOPTION DASHBOARD

With the **Adoption Dashboard**, you can measure and understand adoption of the learning environment, so you can **analyze** and **act** on login trends, course access, tool usage data and enrollment data with easy-to-understand reports. This dashboard helps answer questions on which groups or roles are using Brightspace, how often, and in what ways.



The adoption dashboard includes the following reports:



- **How frequently are users logging into Brightspace?** See the total number of users who login each day, and understand the peaks and troughs. View minimum, average, and maximum counts over selected date range.
- **Are users actively accessing their courses?** With Course Access, you can see whether enrolled users are actively accessing courses across your organizational hierarchy. Drill through this hierarchy to compare and contrast at each organizational level all the way down to course offering.
- **How are tools used over time at my organization?** Understand and compare trends by tool, by role, and by organization unit such as department. You can also track the success of any adoption campaigns.
- **What are our enrollment and withdrawal trends?** See how many users are signing up and withdrawing from courses to quickly identify whether trends are higher than expected.

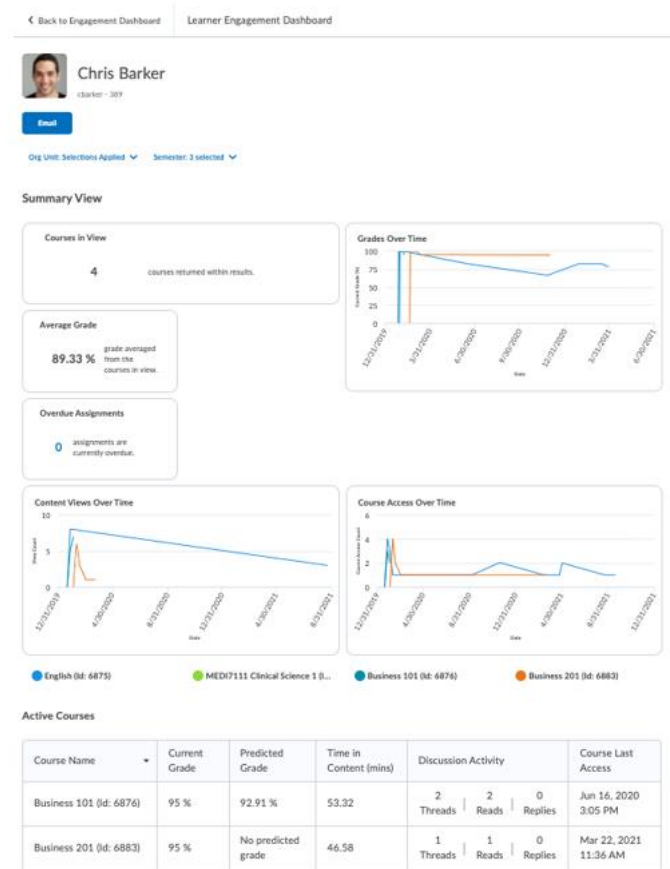
ENGAGEMENT DASHBOARD

With Brightspace Engagement Dashboard, easy-to-understand reports are available when you need them to identify at-risk and succeeding groups and individuals. It's designed to help roles such as advisors, principals, and people leaders to highlight areas where intervention is needed, content progress, discussion engagement, and engagement in assignments with their associated scores.

The engagement dashboard includes the following reports:

- **Last course access:** Shows how many users have never accessed a course or have accessed a course in the last however many weeks, and the users who have not accessed a course in 12 or more weeks.
- **Status of assignments with due date:** Identifies when individual students and groups submit their completed assignments. From that information, instructors and administrators can glean which students are at-risk and how successful students are overall.
- **Time in content distribution:** Help identify students who are struggling with the course content and may be at risk of not successfully completing the course.
- **Time in content effect on grades:** Displayed as a scatter plot, total time each user is spending in each course's content compared to their current final grade in each course is highlighted in this visualization.

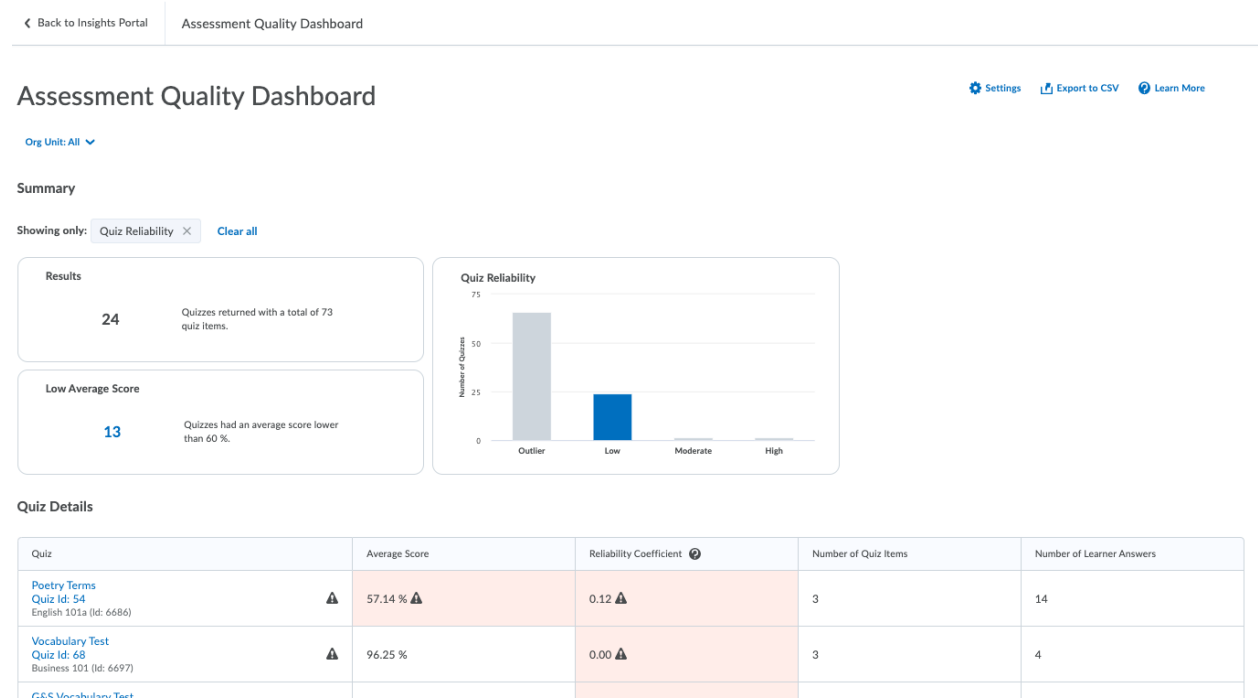
LEARNER ENGAGEMENT DASHBOARD



The Brightspace Learner Engagement Dashboard provides a learner specific view of the Engagement Dashboard across all courses. This is a great tool for Academic Advisors and Student Success coaches.

ASSESSMENT QUALITY DASHBOARD

The goal of the Assessment Quality dashboard is to understand the caliber of assessments using quiz and question statistics such as reliability, average grade, and correlation for all quiz and question types (except question pools). This dashboard includes a visualization that displays data for: quiz details, quiz reliability and other metrics, question details and question statistics such as correlation and discrimination.



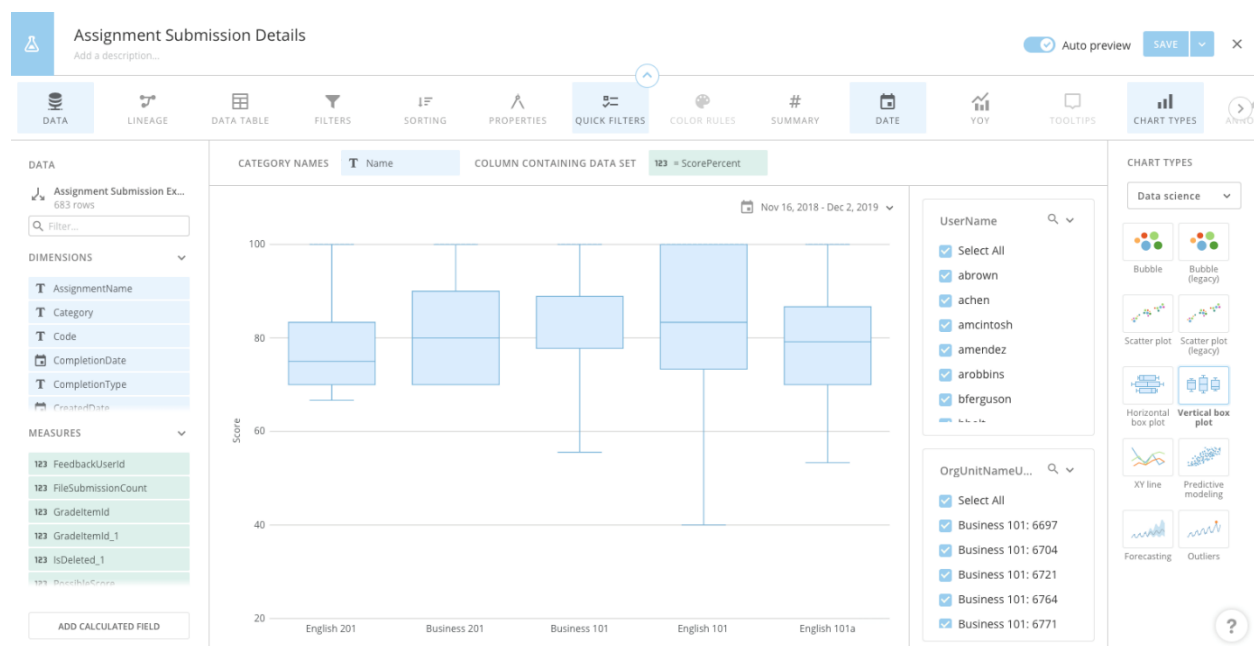
Users of this dashboard can answer questions such as:

- How do I know what quiz questions can be improved?
- Which quiz questions are students answering incorrectly most frequently?

- Is there any correlation between each question's score and the total quiz score?
- How does my quiz discriminate between strong and weak students?

Insights Reports Builder

Build your own custom reports via Insights Report Builder as part of Performance Plus. Our streamlined design makes it easy to create personalized and customized reporting without additional systems, technical skills, or alternate logins.



INSIGHTS REPORT BUILDER ENABLES YOU TO:

You can fully customize the visualizations and dashboards using the visualization engine to build, edit, and share reports. Saved reports are automatically updated with refreshed data sets. Insights Report Builder launches directly from within Brightspace. Based on role access, Insights Report Builder has the following capabilities:

- Create, edit, and share your own reports and visualizations with other participants
- Access to fresh Brightspace Data Set data ready for visualizing
- Ability to schedule reports and set alerts based on custom logic
- Power to leverage row level permissions like we have included in the new Insights dashboards

Student Success System: Predictive Analytics

Student Success System is an early intervention system. It provides instructors with predictive analytic dashboards so they can quickly see at-risk students and, within a click, action that data. With insight to student achievement early in courses along with a predictor of how a student will finish in the course, instructors can provide tailored interventions to help correct the student's learning path. These capabilities help improve retention, completion, and graduation rates.

[Fundamentals of Science](#)

[Content](#)
[Classlist](#)
[Discussions](#)
[Quizzes](#)
[Student Success System](#)
[Grades](#)
[Calendar](#)
[Edit Course](#)
[Class Progress](#)
[Mc](#)

[Student Success System](#) > Brittany Allen

Brittany Allen
874236

Credits Earned -

Credits Attempted -

GPA -

Email Student

	-4	-2	0	2	4
Success Index					
Course Access					
Content Access					
Social Learning					
Assessments					

Success Index

◆ Potential Risk

60%

Predicted Grade

Indications

- The student only participates in some of the course's online discussion
- The student has performed poorly on assessments.

Course Timeline

Success Index

Timeline - Weeks

Risk Quadrant

	Under-Engagement Risk	On-Track/Not At Risk
Current Grade		<p>Brittany Allen</p>
	<p>Withdrawal/Dropout Risk</p>	<p>Academic Performance Risk</p>

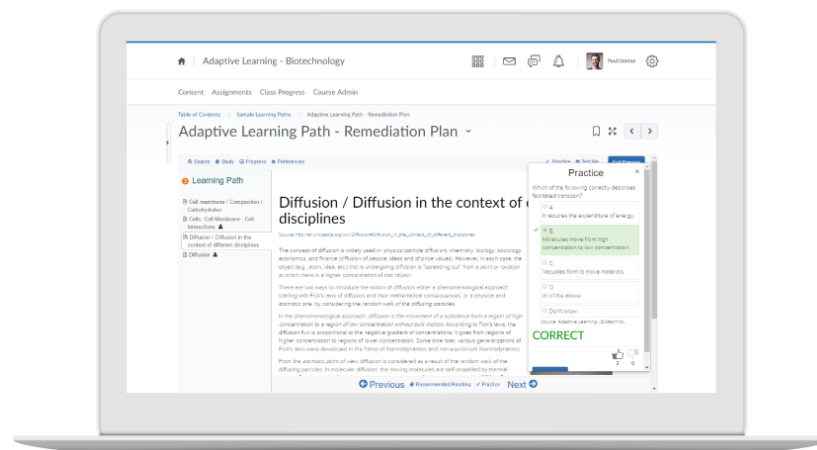
The system uses statistical analysis to generate final grade predictions for students on a weekly basis, based on the following domains:

- **Course Access** | The course access domain compiles Brightspace logins as well as accesses of course-specific homepages as a demonstration of a student's engagement in a course.
- **Content Access** | The content access domain describes engagement by tracking access of content material for the course.
- **Social Learning** | The social learning domain uses data captured discussions as another indicator of student engagement. The sociogram visualization identifies students that may be performing well in terms of their grades but may be disconnected from the class socially which could present a risk for dropping out or transferring. This visualization allows instructors to see source data from this domain for the predicted final grade.
- **Assessments** | This domain describes student assessment performance. The chart provides a compact visualization of student performance across all course assessments, both individually and compared with classmates. This visualization allows instructors to see source data from this domain for the predicted final grade.

The predictive model for the course can be modified as needed. For example, you can choose which domains to include in the model, as well as confirm or modify the grade ranges for the three risk categories (on track, potential risk, at risk).

LeaP: Adaptive Learning

LeaP determines gaps in a student's skill set and then provides the right content targeted to each student's specific areas of improvement. These adjustments and content recommendations happen in real time, without instructor intervention. LeaP takes the personalization features of Brightspace one step further, automating the creation of adaptive learning pathways and content recommendations.



This smart engine dynamically adjusts and recommends content based on student achievement and progress through course material. This not only creates efficiencies for instructors but also engages students and promotes their success by adjusting to their activities and needs throughout the semester. It is especially useful in helping students prove their existing knowledge and then creating a faster, tailored path through material to allow for more rapid attainment, as well as supporting students who need extra help with personally tailored remedial course content.

About D2L

D2L is the software leader that makes learning experiences better. The company's cloud-based platform is easy to use, flexible, and smart. With Brightspace, organizations can personalize the experience for every learner to deliver real results. The company is a world leader in learning analytics: its platform predicts learner performance so that organizations can take action in real-time to keep learners on track. Brightspace is used by learners in higher education, K-12, and the enterprise sector, including the Fortune 1000. D2L has operations in the United States, Canada, Europe, Australia, Brazil, and Singapore.

CONTACT US

Phone: 1-519-772-0325 (Worldwide)

Toll Free: 1-888-772-0325 (North America)
+44-203-695-8580 (United Kingdom and Europe)
0-800-452-069 (New Zealand)
1-800-778-631 (Australia)
0-800-891-4507 (Brazil)

Fax: 1-519-772-0324

Email: ContactUs@D2L.com

Facebook: facebook.com/D2LInc

Twitter: @D2L

Web: www.D2L.com

The ideas and images in this document are property of their respective owners. All D2L marks are trademarks of D2L Corporation. Please visit D2L.com/trademarks for a list of D2L marks.

As part of the D2L family of companies, D2L Ltd., the proposing entity, draws upon the experience, values and expertise of its parent company, D2L Corporation, and shares this with clients throughout the United States. For consistency and clarity throughout this proposal, the collective of both D2L Corporation and D2L Ltd. is referred to as "D2L." The D2L family of companies includes D2L Corporation, D2L Ltd, D2L Australia Pty Ltd, D2L Europe Ltd, D2L Asia Pte Ltd, and D2L Brasil Soluções de Tecnologia para Educação Ltda.